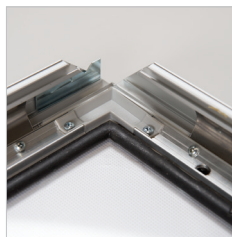


# Lockable Weatherproof Smart Ledbox 1.38" / 35 mm Single Sided



Lockable weatherproof smart ledbox:  
Outdoor Smart LEDbox has been improved for using in public places with higher security. Sequentially opening profiles with an allen key keep your poster safe. High and even illumination gets consumer attention to your message.



All units pass CE/UL PAT test and comes along with Quality Certificates and with 98.43" electrical cable, UK and EU plugs should be mentioned on order. Cable length can be extended up to 275.59" by additional cables.



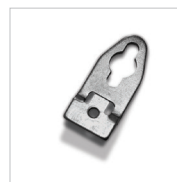
LED illumination save up to 60% energy costs (compared to fluorescent technology) with an increased life expectancy.



The SMART LED BOX's lightweight, low voltage requirements allow it to be mounted anywhere there's access to a regular electrical outlet, and the unique frame extrusion offers a wide range of mounting or hanging options.



- Improved Led technology and laser treatment.
- IP67 and CE listed electrical Components.
- Offers evenly diffused lux in all sizes.



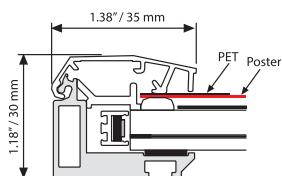
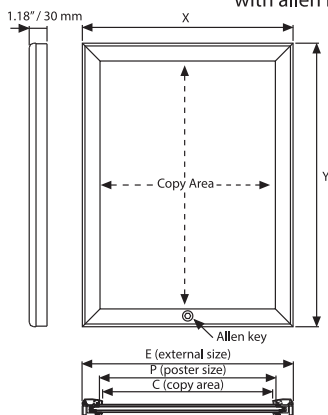
2 wall hangers are standard in each product. Moving hangers let the mounting in portrait and landscape position.



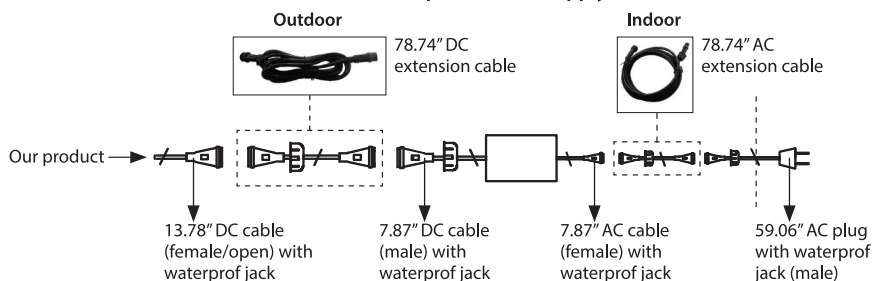
Mobile cable outlet, from the edge and from the back of the aluminum box.



Locking frame with allen key



## Weatherproof Power Supply (IP67)



MATERIAL : Silver anodised aluminium					WEIGHT	PACKING SIZE
ARTICLE	EXTERNAL (x-y)	POSTER SIZE	COPY	LIGHTING	WITH PACKING	*W X H X D
ULH35TN022	24.41" X 30.43"	22" X 28"	21.65" X 27.68"	1600-1900 LUX	20.943 lbs	25.98" X 35.83" X 3.15"
ULH35TN024	26.42" X 38.43"	24" X 36"	23.66" X 35.67"	1400-1700 LUX	25.353 lbs	27.95" X 43.90" X 3.15"
ULH35TN034	32.40" X 42.40"	30" X 40"	29.65" X 39.65"	1400-1700 LUX	30.886 lbs	34.25" X 48.43" X 3.15"
ULH35TN046	42.40" X 62.40"	40" X 60"	39.65" X 59.65"	1000-1200 LUX	59.238 lbs	44.09" X 68.90" X 3.15"



\* W:Width H: Height D: Depth